



Clearwater Nature Center Winter Newsletter

You've Got Mail!



Read Nature Facility Program Manager, Juan Rodriguez's letter introducing himself, and Clearwater's amazing Bald Eagle Annie, [here!](#)

Clearwater Creature Feature

N E O



In case you missed Neo's Crow Bath Tutorial on Facebook...
Get caught up here! Turn up the volume for splishy-splashy sounds.

SOLSTICE SOCIAL

Celebrate Winter with Crafts and Your
Community!

Clearwater Nature Center
Sunday, December 15th
12:30 pm - 2:30 pm



**CRAFT YOUR OWN
DECORATIONS...**



**...AND
SNACKS!**



Parks & Recreation
M-N-C-P-P-C
live more, play more
pgparks.com

[Register Here!](#)

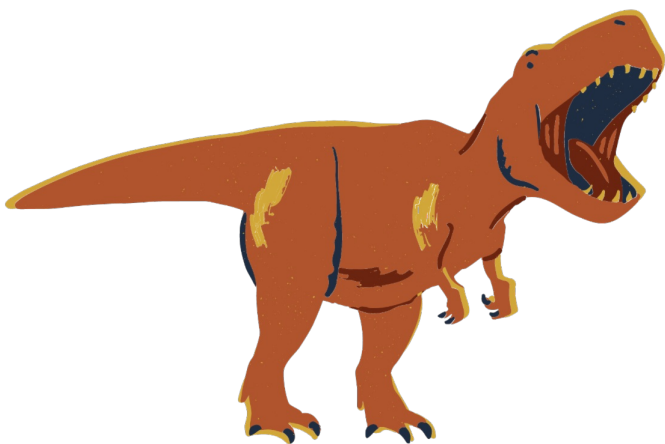


CLEARWATER NATURE CENTER

Upcoming Winter Programs

Click [HERE](#) for the
Winter Program Flyer

DINO FEST- A Roaring Success



We are so grateful for everyone in the community who stopped by and joined in celebrating and exploring the great outdoors and dino roars!

Photos of the festivities will be coming soon!

Stay Connected!

A huge thank you for sharing your email address with us when you came to visit!

Our newsletter will be sent out quarterly, so be sure to keep an eye on your inbox for the latest news coming out of Clearwater Nature Center each season. We will be featuring our incredible animals, sharing exciting staff updates, and much more!

In the meantime, you can check out our PG Parks Nature Facebook page for the latest information and event announcements and our Parks Direct web page to register for upcoming programs.

PG Parks Nature Facebook
Page

Parks Direct

[Clearwater Nature Center](#) | 301-297-4575 | ClearwaterNatureCenter@pgparks.com

Open Tuesday - Saturday 10:00 am - 5:00 pm

Open Sunday 10:00 am to 4:00 pm

Clearwater Nature Center, PG Parks | 11401 Thrift Road, Clinton, MD 20735

[Unsubscribe clearwaturnaturecenter@pgparks.com](#)

[Update Profile](#) | [Constant Contact Data Notice](#)

Sent by clearwaturnaturecenter@pgparks.com powered by



Try email marketing for free today!